

TECHNICAL RIDER

PERFORMANCE "XOCOLAT"

SCENIC SPACE

- Minimum width 6 m. optimal 8 m.
- Minimum depth: 4 m. optimal 6 m.
- Minimum height 2,5 m. optimal 3,5 m.
- White floor (provided by the company)

LIGHTING (attached plan)

- Equipment power: 20 Kw. (minimum) optimal 40 Kw.
- Type of connection: 220 v or 380 v + ground.
- Channel No.: Optimal: 36 DMX channels. Minimum 12 DMX channels.

SOUND

- Equipment power: 300 w. (minimum) optimal 1000 w.
- Playback device: 1 Mac (provided by the company).

SET UP NEEDS

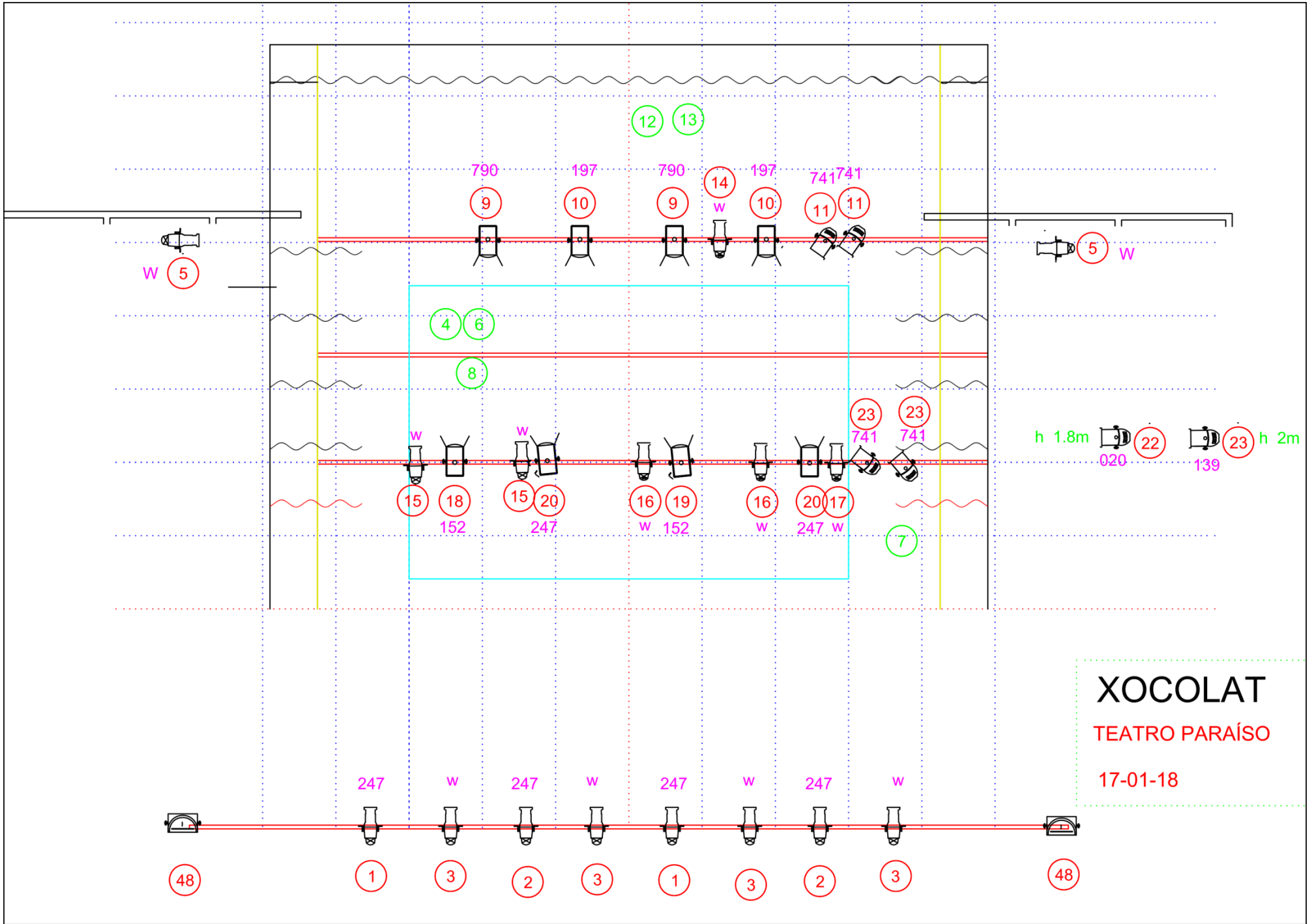
- Unload: Time: 30 minutes aprox.
Needed: 2 people.
- Set up: Spaces with technical equipment: 4 hours.
Spaces without technical equipment: 5 hours.
Needed: 1 electrician and 1 machinist
- Show duration: 45 minutes.
- Take down: Time: 1 hour.
Needed: 1 electrician
- Load: Time 30 minutes aprox.
Needed 2 people.

RISK ASSESSMENT

- Scenography materials: PVC, wood, methacrylate and aluminium.
- Structure: rounded forms, easy to transport and install, with no sharp, pointed, or flammable parts.
- Smoke machine is used, and a candle is lit at the end of the show.

OTHER NEEDS

- Total darkness and black camera.
- Dressing rooms: 2 with shower.
- Parking for a van.



W 5

790

197

12 13

9

14

197

741

741

5 W

4 6

8

h 1.8m 020

22

23 h 2m

139

23

15

18

152

15

20

247

16

19

W 152

16

20

W 247

20

17

W

7

247

W

247

W

247

W

247

W

48

1

3

2

3

1

3

2

3

48

HOJA MÁGICA XOKOLAT

Patx	Canal	Descripción	Posición	Ref. Color LEE	Dirección
	1	FRONTAL ZONA IZQUIERDA ESCENOGRAFÍA			
	2	FRONTAL ZONA DERECHA ESCENOGRAFÍA			
	3	FRONTAL ZONA IZQUIERDA ESCENOGRAFÍA			
	4	BOMBILLA ROJA			
	5	KALLE POR DETRÁS ESCENOGRAFIA			
	6	PANTALLA			
	7	MAKINA			
	8	RUEDAS L			
	9	KONTRA 152			
	10	CONTRA 152			
	11	KONTRA 741			
	12	RUEDA RÁPIDA			
	13	RUEDA LENTA			
	14	RUEDA GRANDE			
	15	REFUERZO DELANTE MÁKINA			
	16	REFUERZO FUGA CHOCOLATE			
	17	MAKINA R			
	18	FRONTAL PANTALLA			
	19	FRONTAL NOCHE PANTALLA			
	20	MAKINA ESTROPEADA			
	21	GOBO XOCOLAT			
	22	CALLE			
	23	PAR FRÍO 2FR			
	24	SALA			